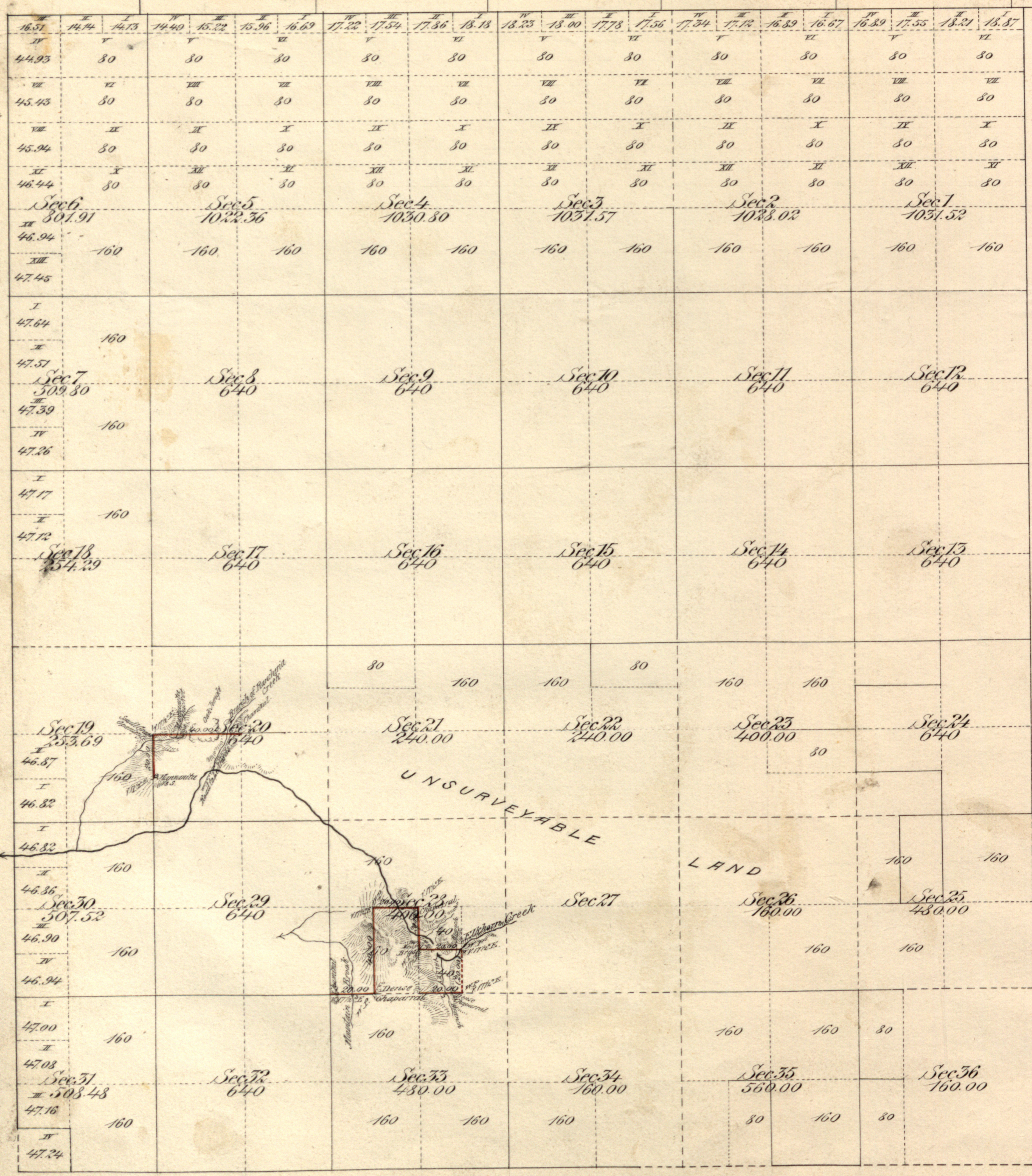


Rec^d with Smr Lewis letter of Sept 16th 1881.
 Paid per Report. 36.363

Township N^o 12 North, Range N^o 12 West, Mount Diablo Meridian.

Dep.



Posted Dec. 22. 1881.
 C. B.

Public Land surveyed under former Contracts	18,779.96 Acres
present Contract	1,440.00 "
Aggregate Area of Public Land	20,219.96 Acres
Estimated Unsurveyed Mountain Land	4,263.01 "
Aggregate	24,482.97 "

Surveys Designated	By whom Surveyed	Date of Contract	Amount of Surveys	When Surveyed	Mean Direction
Section and Legal Subdivisions on lines of Township	D. F. Spurr	November 6 th 1830	2 mls by the rule	August 29 th 1831	17 ^o 30' East

The above Map of Township N^o 12 North, Range N^o 12 West, Mount Diablo Meridian is strictly conformable to the field notes of the Surveys thereof on file in this Office, which have been examined and approved.
 Surveyor General's Office,
 San Francisco, California,
 September 15, 1881.

Thos Wagner