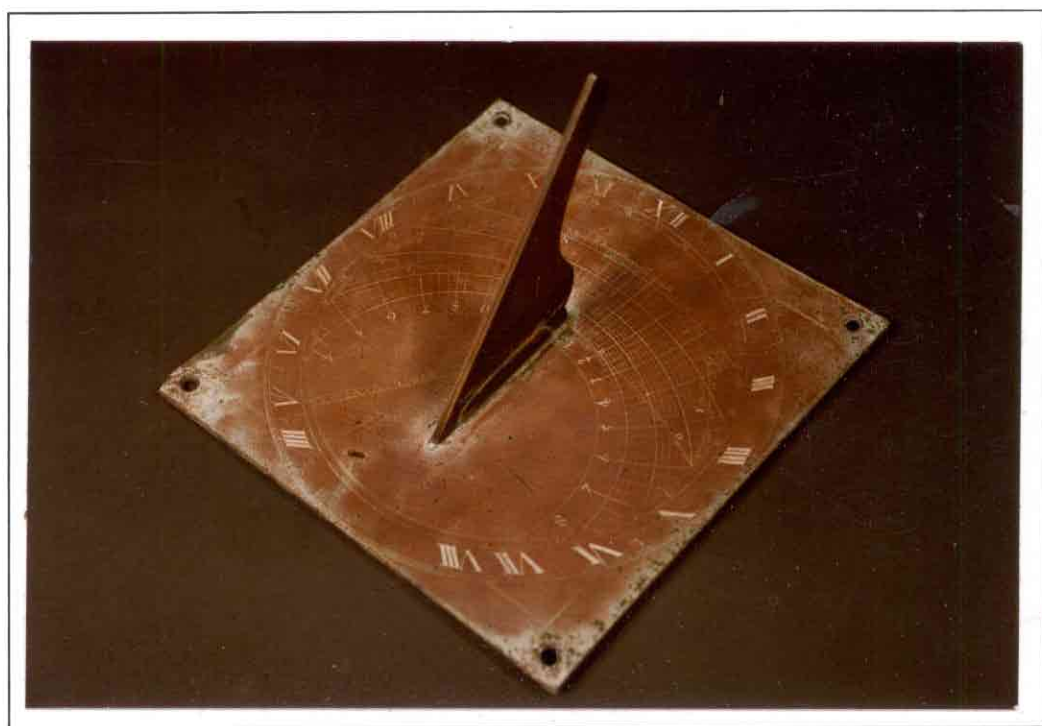


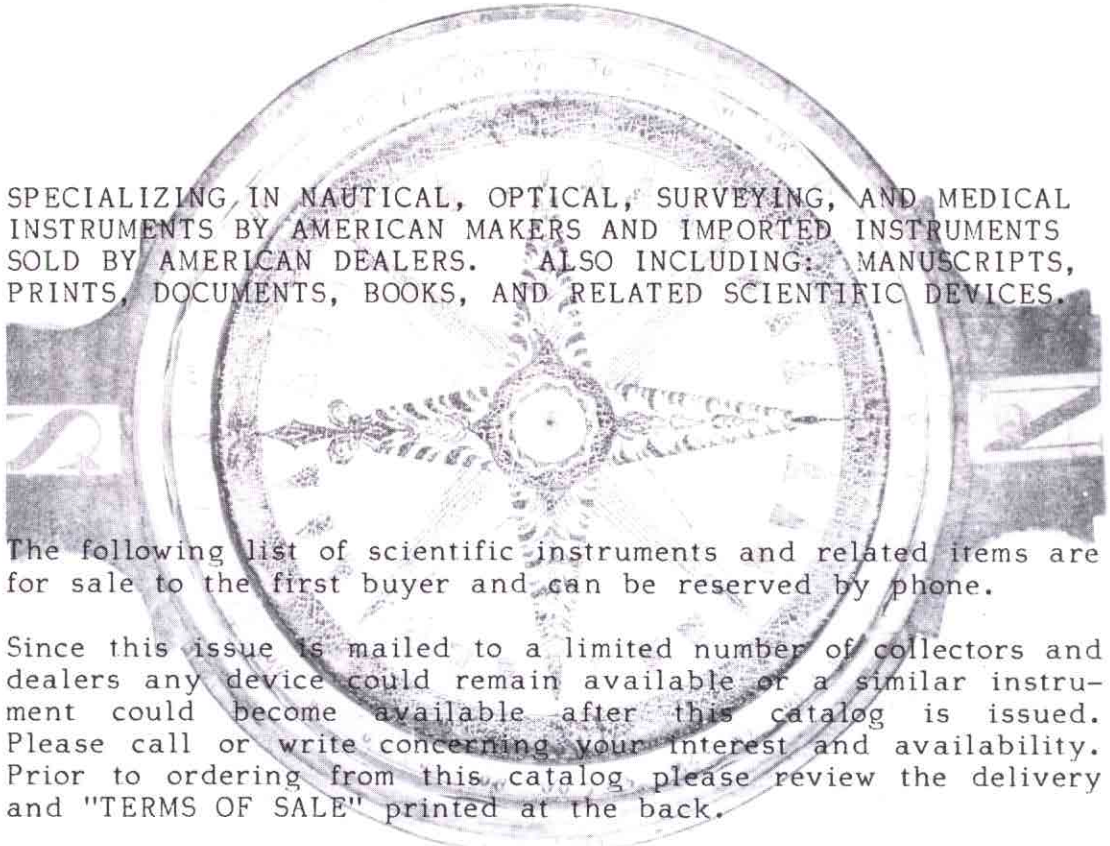
SCIENTIFIC AMERICANA



Spring 1984

SCIENTIFIC AMERICANA

P.O. Box 2337
Saugatuck, CT 06881



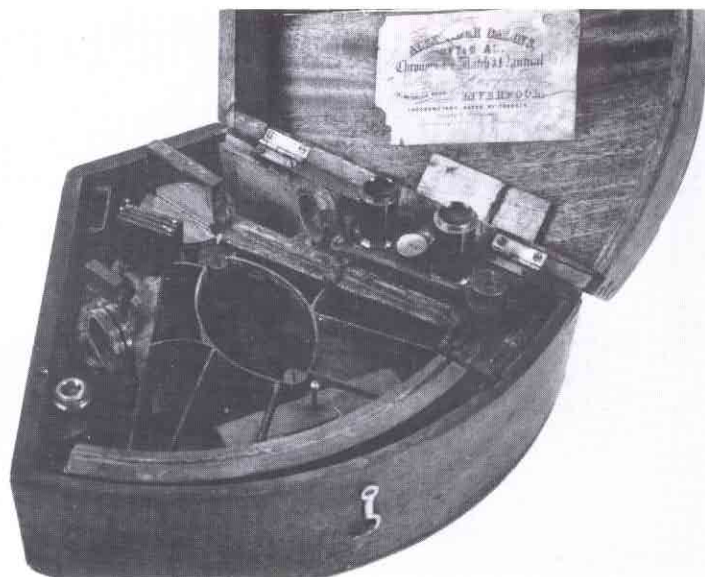
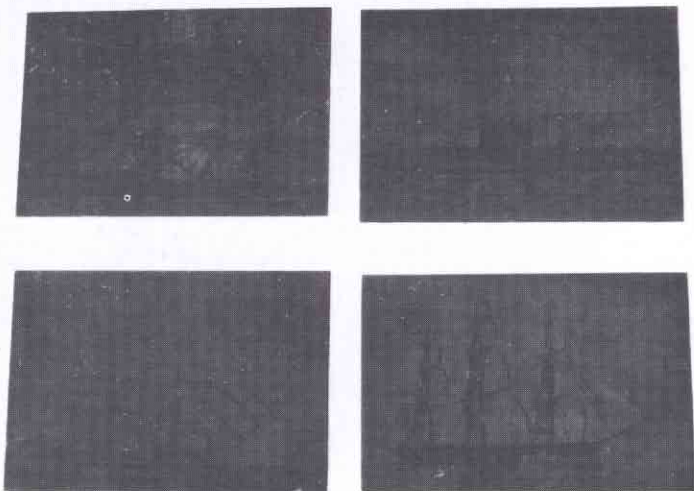
SPECIALIZING IN NAUTICAL, OPTICAL, SURVEYING, AND MEDICAL INSTRUMENTS BY AMERICAN MAKERS AND IMPORTED INSTRUMENTS SOLD BY AMERICAN DEALERS. ALSO INCLUDING: MANUSCRIPTS, PRINTS, DOCUMENTS, BOOKS, AND RELATED SCIENTIFIC DEVICES.

The following list of scientific instruments and related items are for sale to the first buyer and can be reserved by phone.

Since this issue is mailed to a limited number of collectors and dealers any device could remain available or a similar instrument could become available after this catalog is issued. Please call or write concerning your interest and availability. Prior to ordering from this catalog, please review the delivery and "TERMS OF SALE" printed at the back.

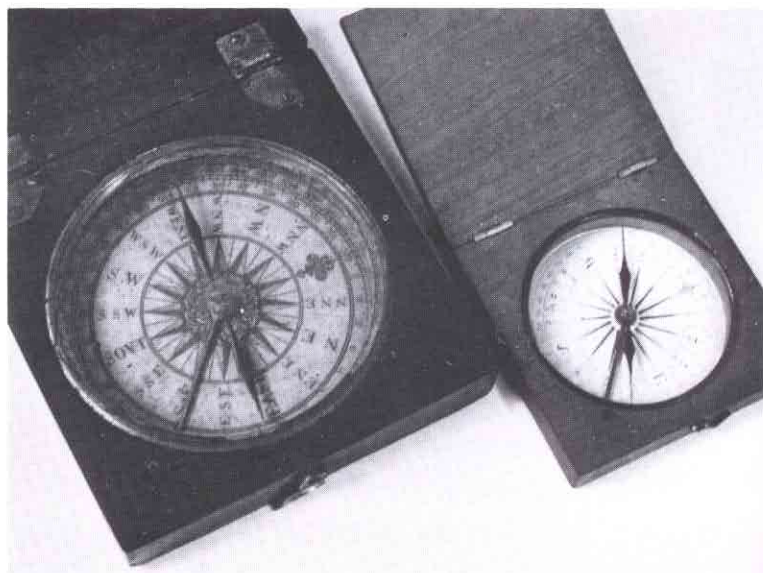
Jonathan Thomas

(203) 227-2622



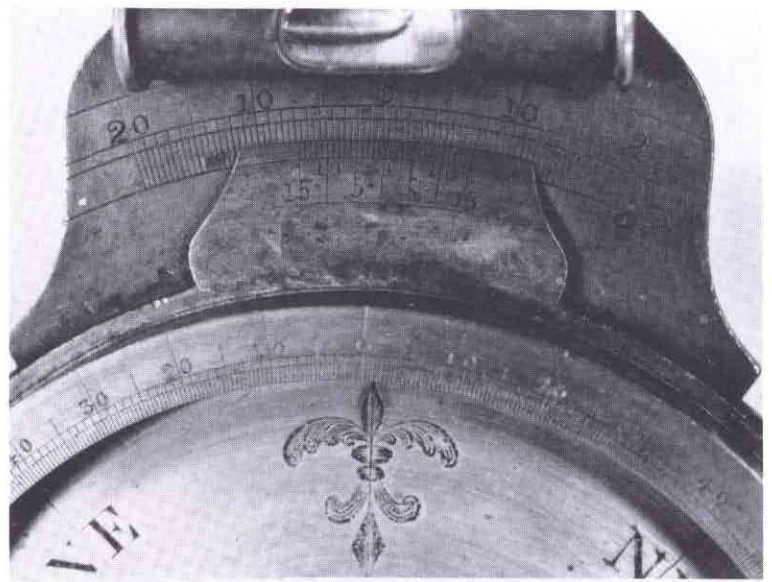
15. UNUSUAL GROUP OF FOUR NAUTICAL COPPER PRINTING PLATES: Each heavy copper plate is in clean condition depicting mid-19th. century sailing ships under full sail. They measure $4\frac{1}{2}$ " x 3" and contain great detail. Unique set of nautical Americana..set: \$100..each: \$30.

16. EARLY 19th. CENTURY BRASS CASED SEXTANT: An American Seacaptain's instrument having both sighting tubes and 3rd. optical tube in fitted compartments. Retaining the original light green finish and in working order, with six of seven filter glasses. The scale is hand-engraved and marked "Spencer, Browning & Rust, London." The shaped case is original and signed inside "Capt. D. Burt's" with a label of instrument maker "Alexander Cairns" of Liverpool who probably serviced it during a voyage. Circa 1815.....\$795.



17. UNUSUAL CASED SET OF BRASS & IVORY DRAWING INSTRUMENTS, circa 1800: This complete set contains nine drawing tools including dividers, scribe, compass, and pen & pencil holders. There are two ivory turned handles and an attractive brass 90° rule. The case is leather lined having an inside top of silk and covered in sharkskin, $6\frac{3}{4}$ " x 4" overall.....\$150.

18. NAVIGATORS' OR SURVEYORS' WOOD CASED COMPASS: The larger solid wood compass is 4" square containing an original paper direction card with 16 points and a mariners face over two 0° 360° scales. The smaller cased compass is later having a simpler paper dial face, also in good condition. The Eighteenth Century compass.....\$175. The smaller compass.....\$75.

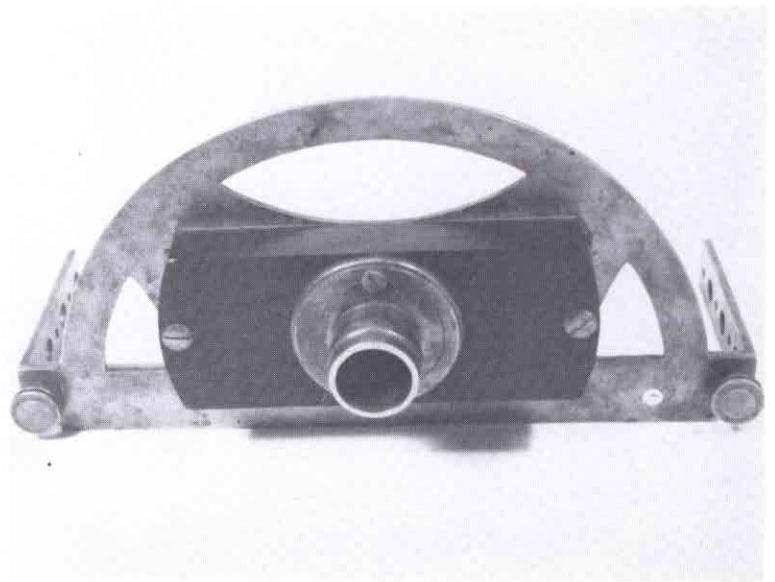
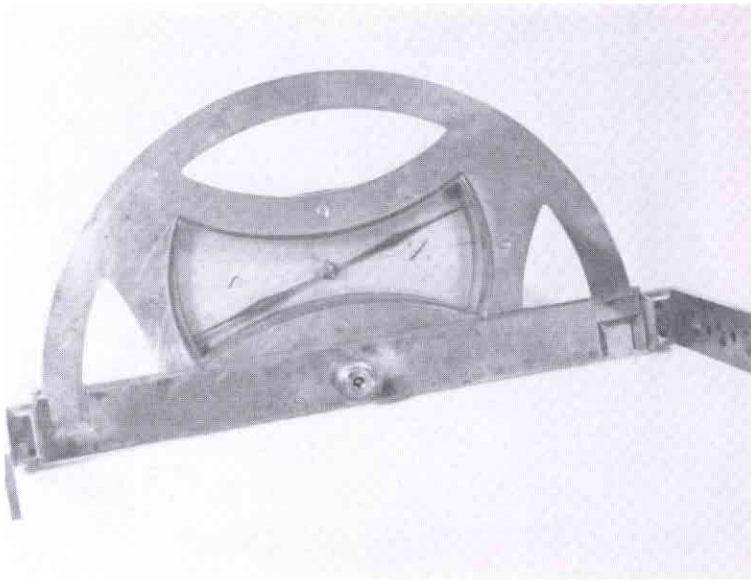


19. SURVEYOR'S VERNIER COMPASS WITH COMPLETE OUTFIT, circa 1845: Engraved on the compass is the maker; "Hewitt & Son...New York" a recorded instrument maker. The name was not in the city listing after 1853. What makes this instrument interesting is the unknown number of surviving compasses since the only reported one was privately owned in Connecticut. The compass is 5 3/4" fully hand-engraved and overall 15 3/4" with engraved vernier. The outfit has a brass cover, ball and socket joint, plum, tripod, and case. A very old mend of brass secures one arm and bubble levels are complete. Other examples are unknown....\$725.



20. COLORFUL SURVEYING PRINT: The print is a sizeable 25" x 17" in a poster type finish of soft colors. The use of the surveying compass, rods, chain and assistant is true to the period it represents. The print is in clean condition.....\$65.

21. AMERICAN WOOD SURVEYING COMPASS WITH PAPER DIAL, circa 1830: The entire instrument is made of wood with the original glazed compass. The compass face is 6" in diameter and made from one block of walnut, overall 15" long. The name "ANTHONY DAVENPORT: is printed inside the compass face. This is an unknown maker from Portland, Maine and the first known compass to be discovered by him. Traditional to their construction the glass retains most of the original putty. Included, not pictured, is a 15" wood cover, with label.....\$675.

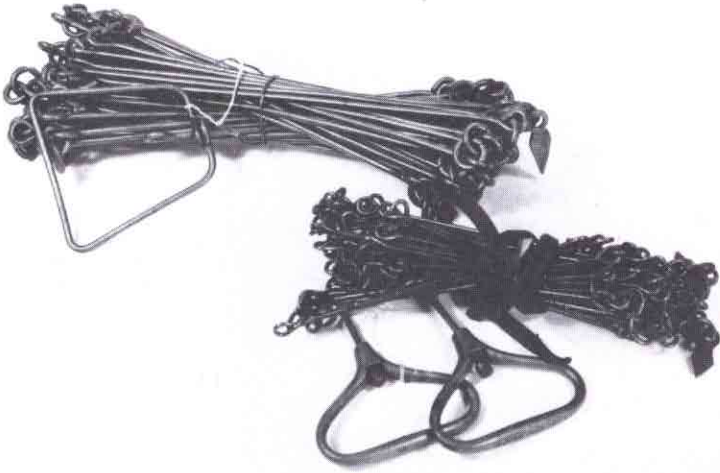


22. AMERICAN EARLY BRASS SEMICIRCUMFERENTOR, circa:1790: This scarce surveying instrument of heavy brass construction is similar to an all-brass-compass. This design uses a trough compass, a rather unusual design, that is silvered with hand-engraved "N" & "S". The back of the compass is shaped from mahogany having a brass staff mount. The overall size of the instrument is 10" by 5" wide with two 3½" sight vanes held by thumb screws. The alidade rotates on a 10" curve over a half circle that is hand divided and engraved by the maker. These exclusively American devices are rare and few have been found in brass. An early and scarce instrument as museum examples are also unsigned. Well made with detail.....\$975.



23. LEATHER BOUND SURVEYOR'S TAPE MARKED WITH LINKS: A 19th. century cased measuring tape made specifically for surveying use. The case is 4" with brass rewind knob and trim. The tape itself is 50' long, showing some use and marked by links. Made by "Chesterman" these were imported for American surveyors with inches on the reverse of the link marks....\$75.

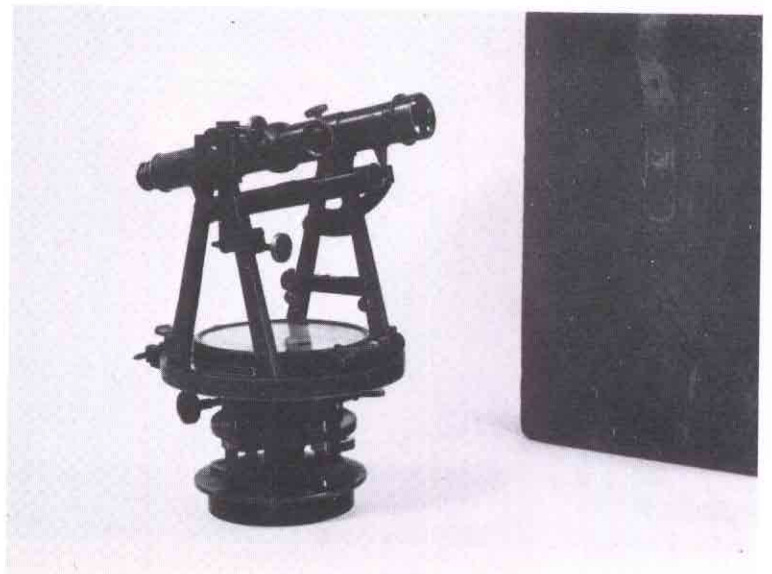
24. UNUSUAL ADVERTISING POSTER OF A SURVEYOR: A bit of our nostalgia is reflected in this illustration of a surveyor with compass and tripod in the background. In good condition and 10" by 13" size it expresses the explorer image of mountain surveying.....\$85.



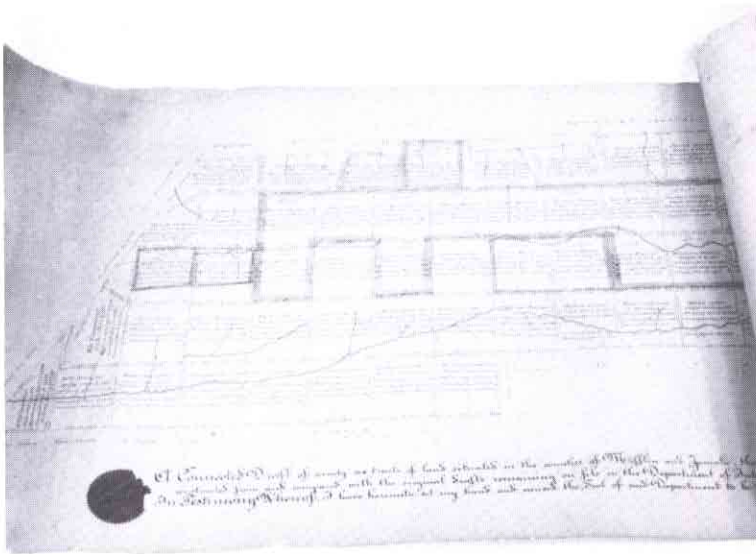
25. SOLID BRASS SURVEYORS CHAIN and a STEEL WITH BRASS HANDLED GUNTER CHAIN: The most unusual all brass linked chain of 10" per link. Heavy brass was used with hand cut tally tags all in clean and unpolished condition.....\$195.

STEEL WITH BRASS HANDLED GUNTER CHAIN: Stamped on the brass handles by the maker "33 FT.. Steel..No.12" and "W & L.E. Gurley, Troy, N.Y." having 4 brass tally tags. Made of steel wire and finished with brazed brass ends. In fine shape.....\$125.

26. EXPLORER'S POCKET BAROMETER/ALTIMETER "CERTIFIED" BY CELEBRATED METEOROLOGICAL MAKER: This instrument is used to determine altitude above sea level and air pressure in inches of mercury. A 19th. century device, it is 2 3/4" with altitude scale of 0 to 5,000 feet. Preserved in a leather case with "Document" signed by "Henry J. Green" who recorded adjustments. An instrument used by surveyors and explorers.....\$165.



27. COMPLETE AMERICAN TRANSIT & OUTFIT, circa 1855: A perfect example of a period transit design nicely signed on the silver compass face "STACKPOLE & BROTHERS" in script along with "New York" below the center. Engraved in small letters are the compass points and No.1096. Stackpole came from Ireland and started the firm in 1843. He was listed as Stackpole and Bro. between 1851-1863 and the Smithsonian has a similar transit with the same name. Over 11½" high with a 5½" compass, outside verniers, three levels and elevation tangent screw the transit fits onto a leveling base and secures over the tripod or into an original case labeled by the maker. All in excellent/original condition.....\$850.

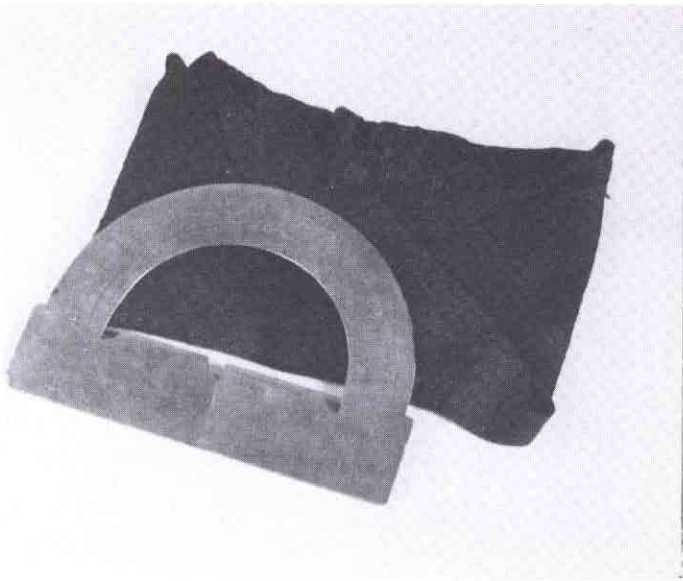


28. PENNSYLVANIA DRAFT OF LAND SURVEYED THROUGH 1795: A most unusual and interesting document on canvas showing seventy-six tracks of land dating from 1793 to 1795. Individual tracks are named, "surveyed" and "patented" all situated in Misslin. The draft is signed by the Deputy Secretary later sealed in 1903. A large 22" by 54" canvas.....\$95.

29. AMERICAN ASTRONOMICAL SURVEYING COMPASS, circa 1840: This portable instrument was used by surveyors to determine magnetic variations. In practice the triangle over the compass acted as a gnomon and the true northern direction was found by viewing through peepsights. An unsigned brass compass of 8", center level and cased. Unique.....\$225.



30. EXCEPTIONAL SURVEYING COMPASS BY MATHEMATICAL INSTRUMENT MAKER "ERASMUS A. KUTZ": Fine cased all brass instrument is almost miniature at less than 12" with a 5" compass rim. This is THE perfect compass: well engraved compass face, 4 3/4" sight vanes, level and needle arrester and staff mount all with 99% original lacquer. The mahogany case has a wonderful label by this New York maker. Kutz, born in 1778, was first listed in 1818 as a rule maker and worked to the 1840's on Water St. A well preserved instrument by an expert maker with detailed hand-engraving and a superb trade label showing he worked at the very same #180 Water street, New York address just as Richard Patten did in 1820.....\$825.
(Detailed picture on inside cover)



31. EIGHTEENTH CENTURY FINE BRASS PROTRACTOR, probably American: Cut from one piece of brass and $4\frac{1}{2}$ " across the rule is hand-engraved with two degree scales and a 90 mark. This attractive rule is enclosed in a raw-leather pouch, rare cased version. Circa 1775...\$175.

32. DOCUMENTS WITH ENGRAVED W. & L.E. GURLEY TRADE NAME, dated 1871 and 1876: This well known instrument maker's receipt states "CIVIL ENGINEERS' & SURVEYORS' INSTRUMENTS" along with a detailed engraving of their building. The pair of pen written invoices.....\$45.



33. SURVEYORS RAILROAD DEGREE LEVEL: A most attractively shaped wood and brass device used to maintain a pitch in degrees on rail curves. The level is over 22" with a brass degree scale marked from 10 to 0 to 10 located by a glass bubble tube. The instrument is signed "J. PITKIN & CO. LTD." of London. Very unusual, with an interesting use.....\$225.

34. EIGHTEENTH CENTURY BRASS SURVEYING COMPASS WITH PEWTER GRADUATED SCALE, circa 1790: This is one of the more unusual compasses in materials and construction. Overall it is $14\frac{1}{2}$ " long with 6" sights having a 6" compass of cast pewter, hand-engraved and pewter surface to the dial with eight point star. An enclosed clockwork gear was designed for the external vernier adjusted from the top. Original finish of darkened brass.....\$595.